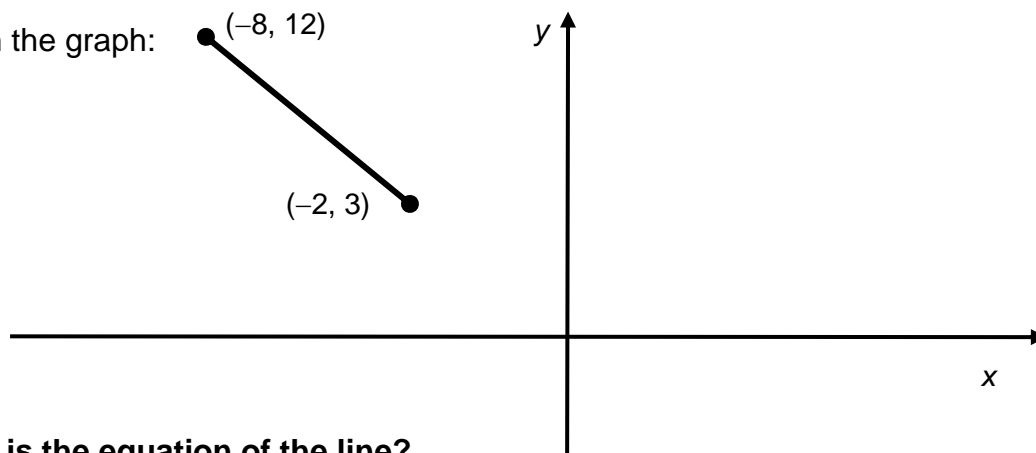


## SLOPE-INTERCEPT FORM OF A LINE (FUNCTIONAL FORM)

1. The linear function  $f$  passes through points A (0, 6) and B (6, -3).

**What is the rule of this function?**

2. Given the graph:

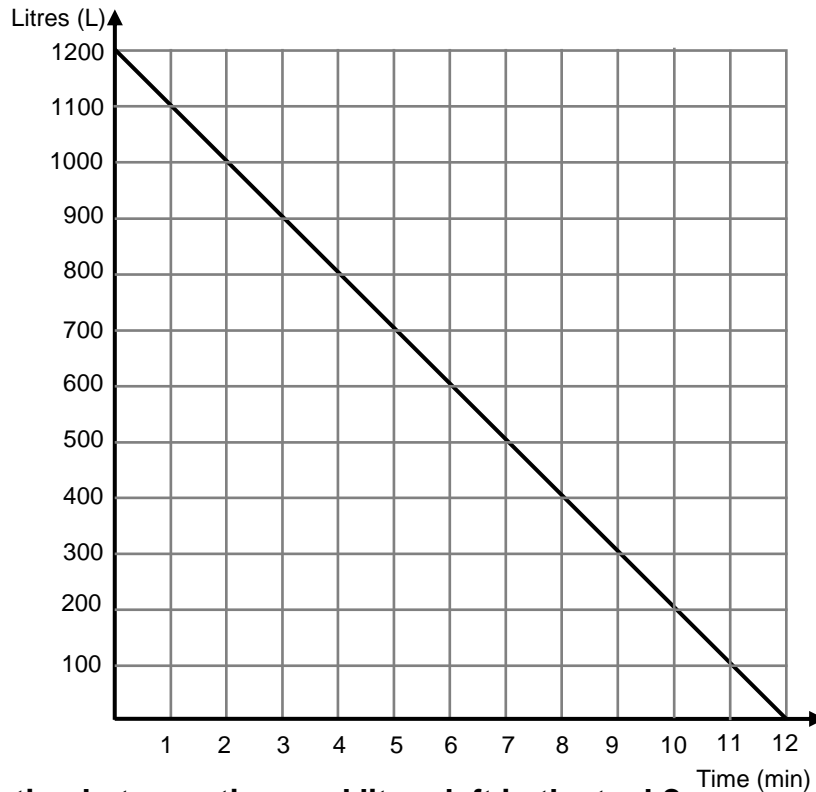


**What is the equation of the line?**

3. A linear function passes through the points (5, 0) and (-10, 3).

**What is the rule of the function?**

4. Cynthia is emptying a large aquarium tank.



**What is the rule showing the relation between time and litres left in the tank?**

## SLOPE-INTERCEPT FORM OF A LINE (FUNCTIONAL FORM)

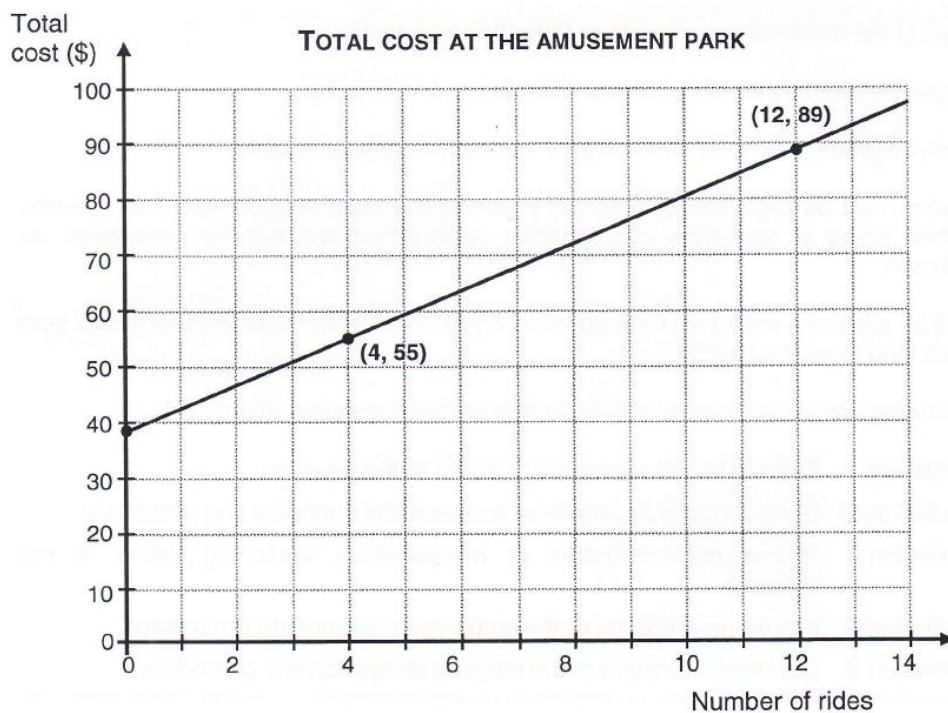
5. A new amusement park offers two different pricing options:

### OPTION A:

The entrance fee is \$26, plus an additional cost per ride. For 10 rides, the total cost is \$83.50.

### OPTION B:

The relationship between the number of rides and the total cost is shown in the graph:



a) What is the cost per ride for Option A?

b) What is the entrance fee for Option B?